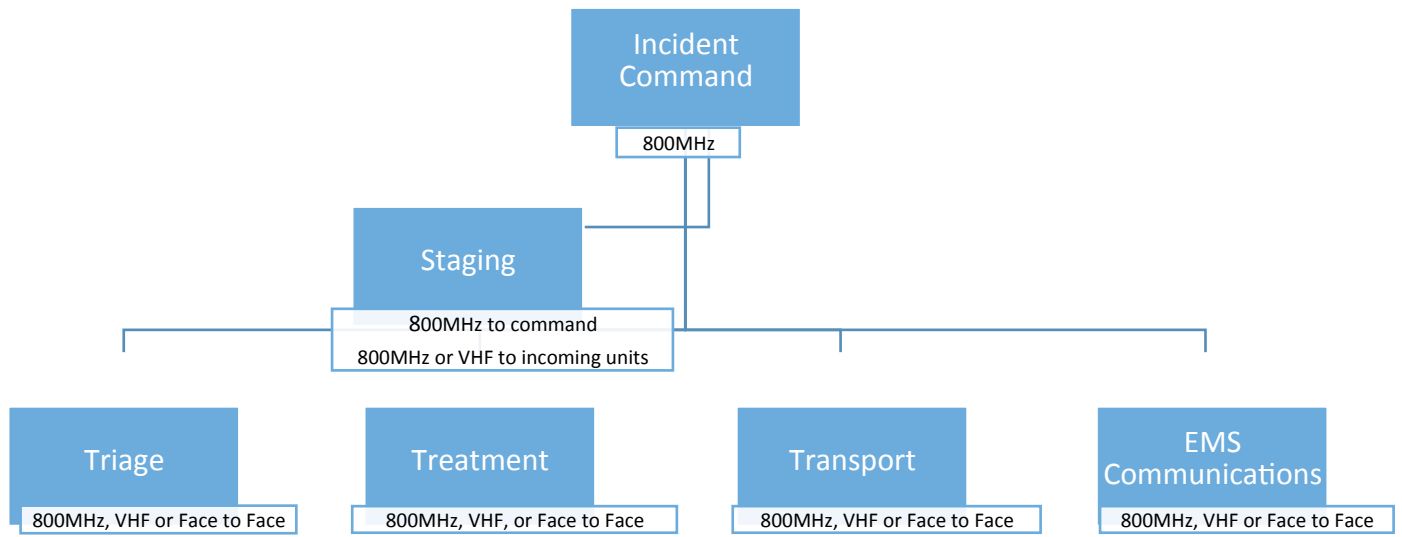


| Triage Officer | |
|-----------------------|--|
| Completed | Develop a Triage Strategy & Coordinate Triage |
| | Primary Responsibilities |
| | Advise and update Incident Command on approximate number of patients |
| | Develop a plan to find and triage all possible patients |
| | Coordinate triage teams |

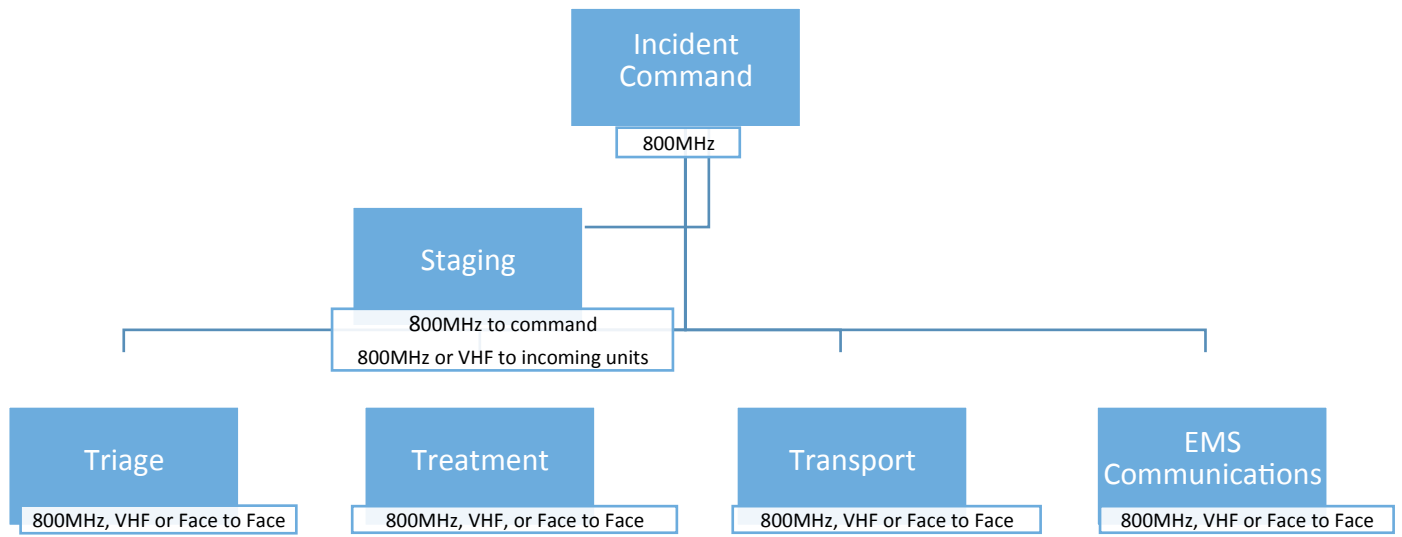
| | | Secondary Responsibilities |
|--|--|--|
| | | Direct Triage Teams to use START/JumpStart Triage system |
| | | Advise Command when initial triage and tagging is complete |
| | | Check all areas around MCI scene for potential patients, walk a ways, ejected patients, etc. |
| | | Perform continuous triage until scene is clear |

| START Triage | PEDIATRIC - START Triage |
|--|--|
| ASSESS - TAG - MOVE ON | ASSESS - TAG - MOVE ON |
| WALKING WOUNDED | WALKING WOUNDED |
| NO BREATHING (after head tilt) | NO BREATHING (after head tilt and rescue breaths) |
| RESP. <10 or >30 CAP REFILL < 2 sec. or no radial pulse MENTAL STATUS CHANGE | RESP. <15 or >45 CAP REFILL < 2 sec. or no radial pulse MENTAL STATUS CHANGE |
| OTHER | OTHER |
| Initial treatments allowed: Opening airway and bleeding control | Initial treatments allowed: Opening airway, Bleeding Control and Rescue Breaths |



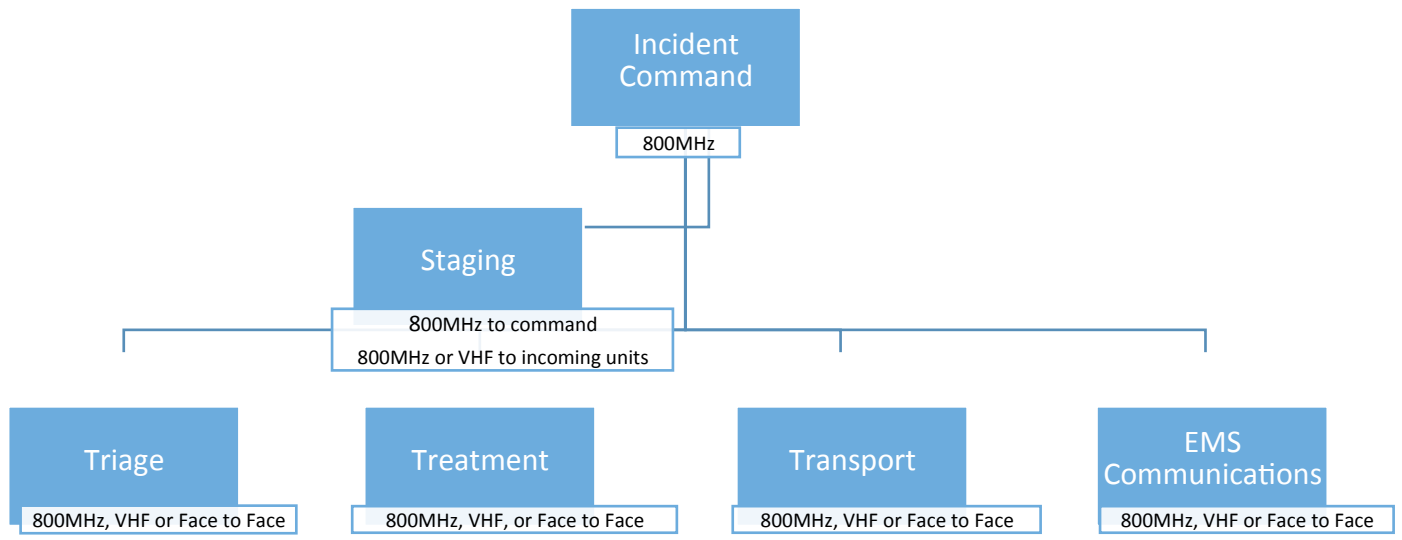
| Staging Officer | |
|------------------------|---|
| Completed | Establish/Manage Staging Area Direct Resources where requested |
| | Primary Responsibilities |
| | Log all resources in and out of Staging |
| | Organize traffic flow in and out of staging area |
| | Send units where requested |
| | Advise Command when resources become "low" |
| | Secondary Responsibilities |
| | Determine best route to scene |
| | Prepare staging units for expected activities (ie. protective clothing, etc.) |
| | Prepare helicopter landing zone |
| | Determine radio channels and inform incoming units |

| START Triage | PEDIATRIC - START Triage |
|--|--|
| ASSESS - TAG - MOVE ON | ASSESS - TAG - MOVE ON |
| WALKING WOUNDED | WALKING WOUNDED |
| NO BREATHING (after head tilt) | NO BREATHING (after head tilt and rescue breaths) |
| RESP. <10 or >30 CAP REFILL < 2 sec. or no radial pulse MENTAL STATUS CHANGE | RESP. <15 or >45 CAP REFILL < 2 sec. or no radial pulse MENTAL STATUS CHANGE |
| OTHER | OTHER |
| Initial treatments allowed: Opening airway and bleeding control | Initial treatments allowed: Opening airway, Bleeding Control and Rescue Breaths |



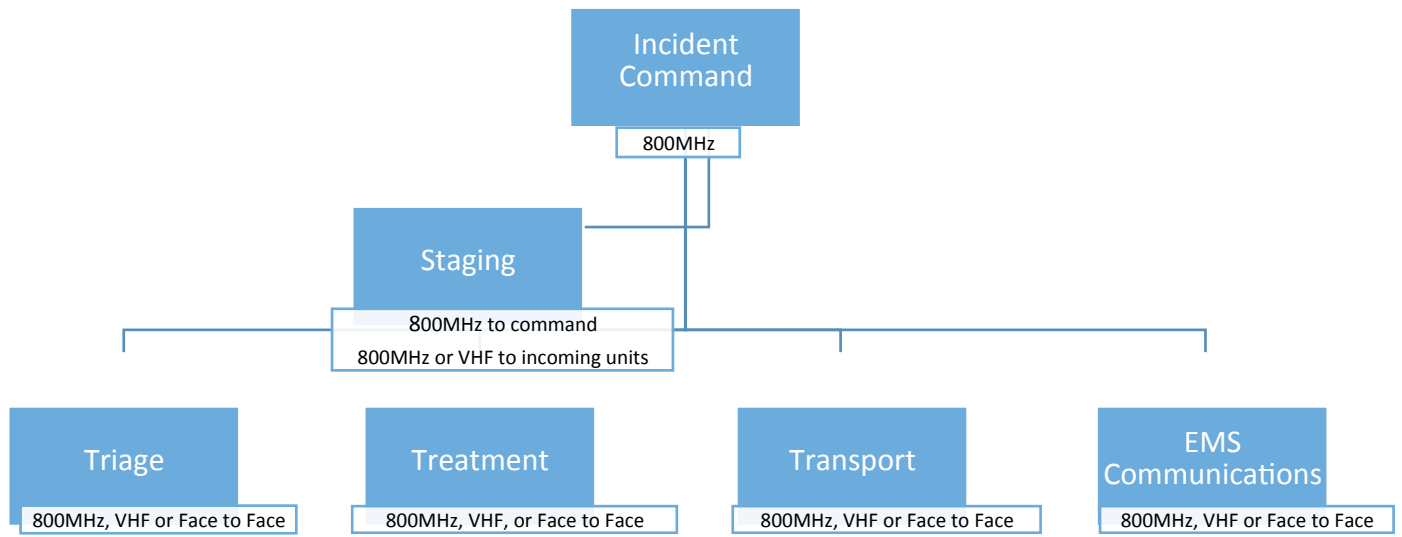
| <h2>Treatment</h2> | |
|--------------------|---|
| Completed | Establish/Manage Treatment Area(s) |
| | Primary Responsibilities |
| | Establish treatment areas and teams (Immediate, Delayed, Minor) |
| | Coordinate movement of patients (Triage → Treatment → Transport) |
| | Provide continuous secondary Triage |
| | Treat life threatening injuries |
| | Prepare patients for transport based on priority |

| START Triage | PEDIATRIC - START Triage |
|--|--|
| ASSESS - TAG - MOVE ON | ASSESS - TAG - MOVE ON |
| WALKING WOUNDED | WALKING WOUNDED |
| NO BREATHING (after head tilt) | NO BREATHING (after head tilt and rescue breaths) |
| RESP. <10 or >30 CAP REFILL < 2 sec. or no radial pulse MENTAL STATUS CHANGE | RESP. <15 or >45 CAP REFILL < 2 sec. or no radial pulse MENTAL STATUS CHANGE |
| OTHER | OTHER |
| Initial treatments allowed: Opening airway and bleeding control | Initial treatments allowed: Opening airway, Bleeding Control and Rescue Breaths |



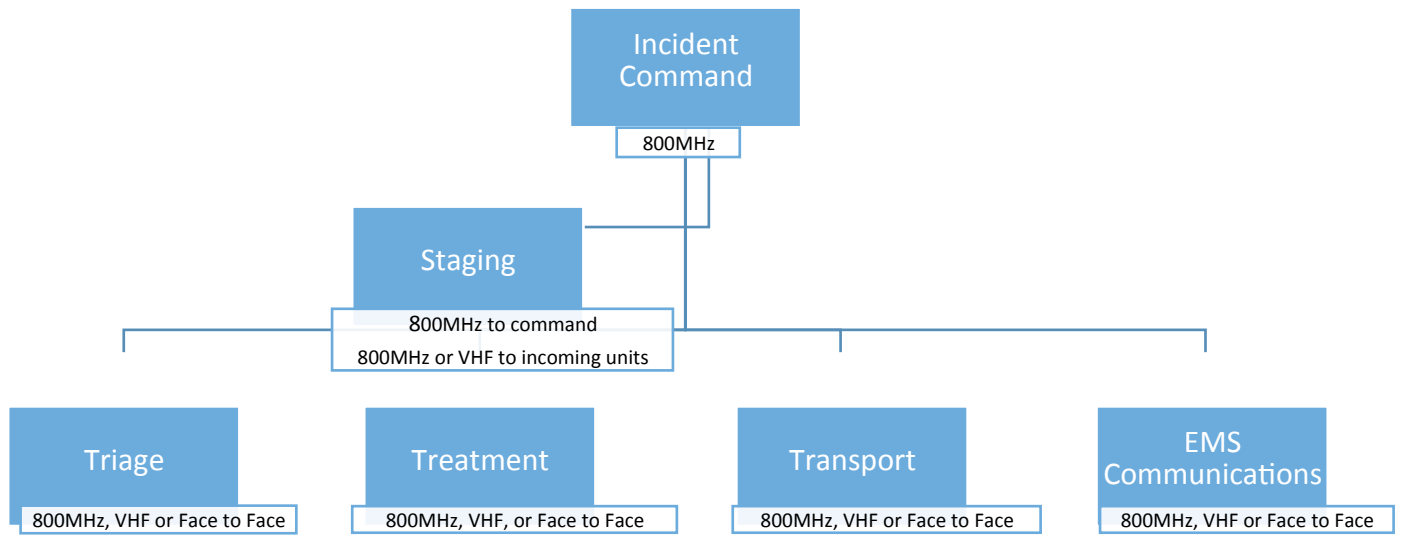
| Transport | |
|------------------|---|
| Completed | Organize transport of patients |
| | Primary Responsibilities |
| | Establish/Manage Transport Area |
| | Request ambulances from Staging when ready |
| | Assign patients to ambulances |
| | Direct ambulances to specific hospitals (use "automatic patient load" chart until directed by Communications) |
| | Record all transports in the Transport Log |
| | Secondary Responsibilities |
| | Instruct transporting ambulances to refrain from contacting hospitals directly |
| | Instruct transporting ambulances to return or not return |

| START Triage | PEDIATRIC - START Triage |
|--|--|
| ASSESS - TAG - MOVE ON | ASSESS - TAG - MOVE ON |
| WALKING WOUNDED | WALKING WOUNDED |
| NO BREATHING (after head tilt) | NO BREATHING (after head tilt and rescue breaths) |
| RESP. <10 or >30 CAP REFILL < 2 sec. or no radial pulse MENTAL STATUS CHANGE | RESP. <15 or >45 CAP REFILL < 2 sec. or no radial pulse MENTAL STATUS CHANGE |
| OTHER | OTHER |
| Initial treatments allowed: Opening airway and bleeding control | Initial treatments allowed: Opening airway, Bleeding Control and Rescue Breaths |



| EMS Communications | |
|---------------------------|--|
| Completed | Perform <u>ALL</u> Hospital Communications |
| | Primary Responsibilities |
| | Notify all hospitals of incident on 63-OAKH |
| | Notify receiving hospitals of incoming patients |
| | Request hospital capabilities beyond “automatic patient load” |
| | Coordinate with Transport Officer: Direct patients to appropriate hospitals |
| | Record hospital capabilities on communication log |

| START Triage | PEDIATRIC - START Triage |
|--|--|
| ASSESS - TAG - MOVE ON | ASSESS - TAG - MOVE ON |
| WALKING WOUNDED | WALKING WOUNDED |
| NO BREATHING (after head tilt) | NO BREATHING (after head tilt and rescue breaths) |
| RESP. <10 or >30 CAP REFILL < 2 sec. or no radial pulse MENTAL STATUS CHANGE | RESP. <15 or >45 CAP REFILL < 2 sec. or no radial pulse MENTAL STATUS CHANGE |
| OTHER | OTHER |
| Initial treatments allowed: Opening airway and bleeding control | Initial treatments allowed: Opening airway, Bleeding Control and Rescue Breaths |



| START Triage | PEDIATRIC - START Triage |
|--|--|
| ASSESS - TAG - MOVE ON | ASSESS - TAG - MOVE ON |
| WALKING WOUNDED | WALKING WOUNDED |
| NO BREATHING (after head tilt) | NO BREATHING (after head tilt and rescue breaths) |
| RESP. <10 or >30 CAP REFILL < 2 sec. or no radial pulse MENTAL STATUS CHANGE | RESP. <15 or >45 CAP REFILL < 2 sec. or no radial pulse MENTAL STATUS CHANGE |
| OTHER | OTHER |
| Initial treatments allowed: Opening airway and bleeding control | Initial treatments allowed: Opening airway, Bleeding Control and Rescue Breaths |